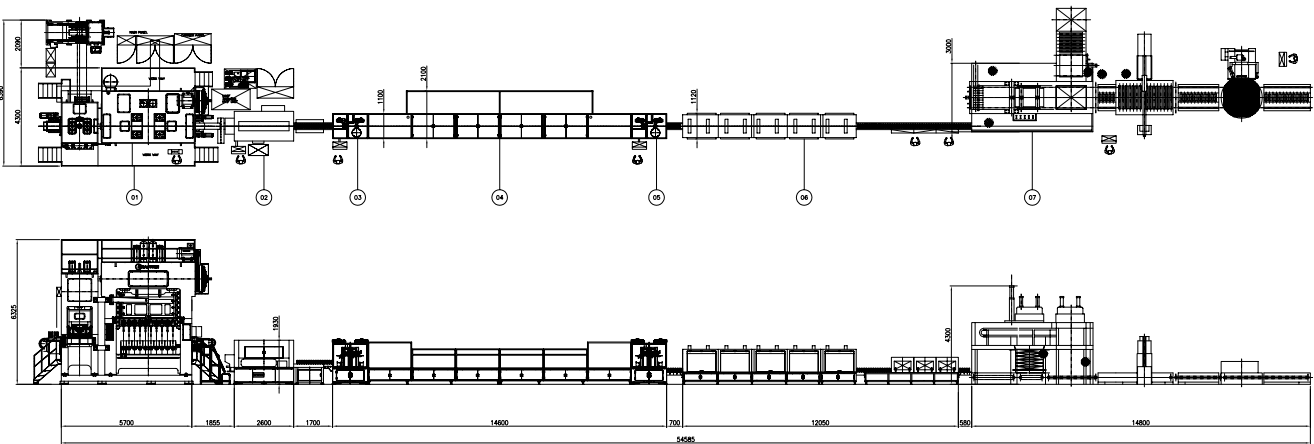


TURN-KEY SOLUTION

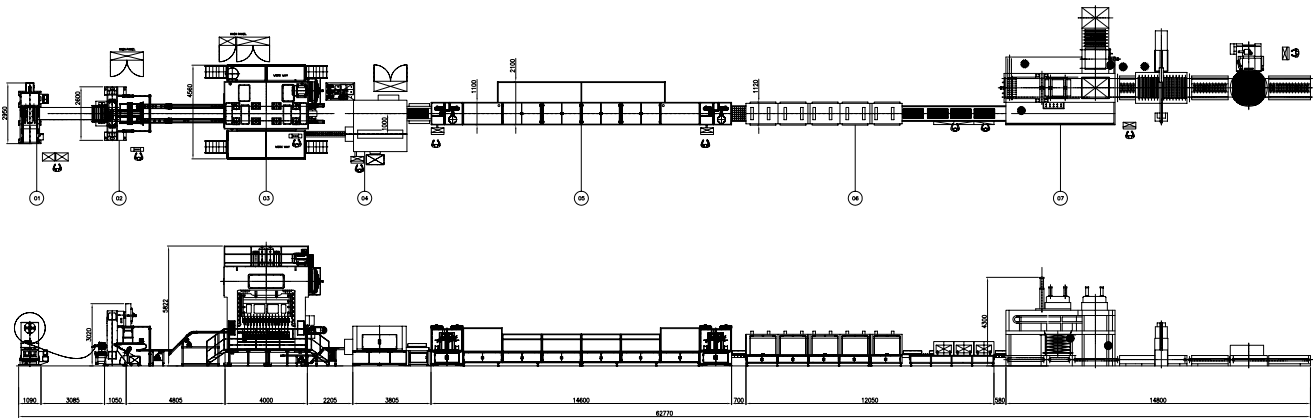
PRISMATIC CELL CASE



PRISMATIC CELL CASE DEEP DRAWING PROCESS



CYLINDRICAL CELL CASE



CYLINDRICAL CELL CASE DEEP DRAWING PROCESS



HISTORY

- 1976

Oct

Established SSCAN Tech
- 1998

Jun

Acquired the CE (18 Liter Square Can End Spout Making Transfer Press)
- 1999

May

Selected as a Venture Enterprise (Small and Medium Business Administration)
- 2003

Oct

Selected as a Specialized Company for Machine Components & Material (Ministry of Industry & Resources)
- Dec

Attained ISO 9001:2000 (Das Certification Ltd.)
- 2004

Jun

Selected as an Innobiz Enterprise (Small and Medium Business Administration)
- Sep

Awarded the Prize for R&D (The Prime Minister)
- Nov

Awarded the Prize for High-Tech Machine (Ministry of Industry & Resources)
- 2009

Aug

Established a Corporate Research Institute (Korean Industrial Technology Development Corporation)
- 2021

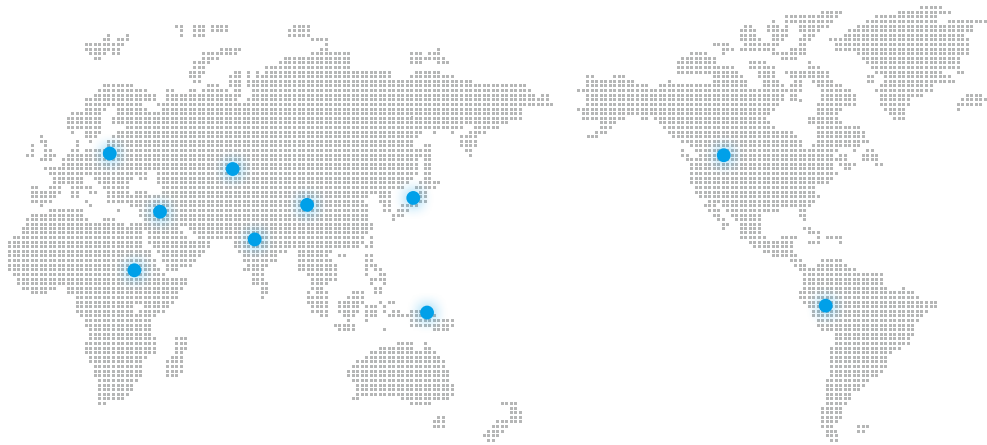
Apr

Selected as a Global IP Star Enterprise (Korea Invention Promotion Association)
- 2022

Jan

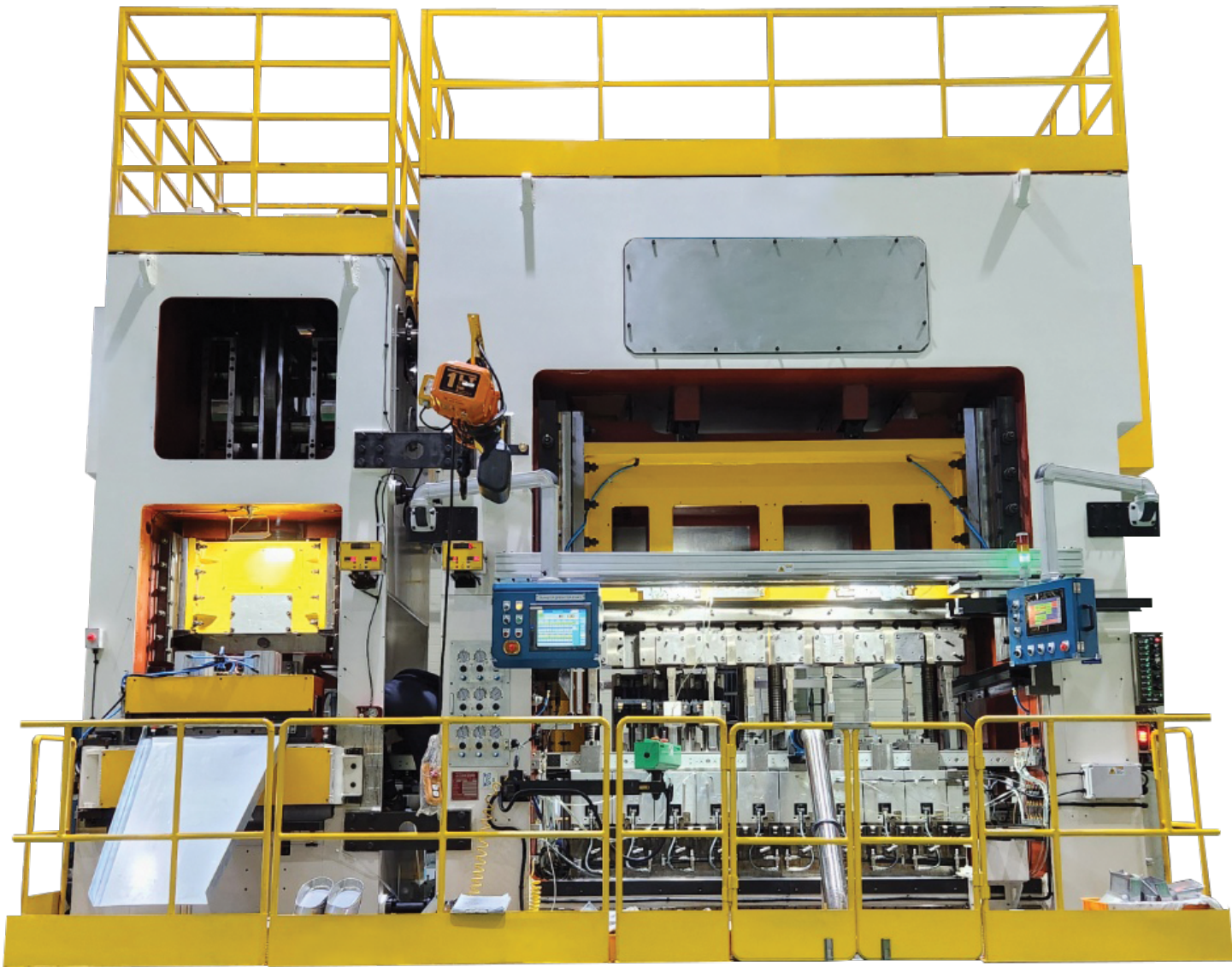
Selected as a Promising Small and Medium Enterprise in Export (Small and Medium Business Administration)

SSCAN TECH IN THE GLOBAL MARKET



OVERSEAS	AUSTRALLIA	VISY PAK	PERU	FADESA / INTRADEVCO / METALPACK
	BRAZIL	BRAZILATA / CMP / VALENCA	VIETNAM	CHIVIRK / AK VINA
	CHINA	SHENZHEN HAUTE / SEANN	SAUDI ARABIA	CMC / SAPIN
	EGYPT	ECC / MIDO / CANCO	SPAIN	GRUMETAL / MBF
	INDONESIA	PT. IMCP / PT. SINAR DJAJA	UKRAINE	FAVOR
	MALAYSIA	CANPAC / KIANJOO / ENG LEONG	INDIA	ADANI / EMAMI / BBRL / GEMINI / NK / GOKUL / VIRAL
	MEXICO	GRUPO ZAPATA / EEEISA / ENVASES	POLAND	TRADEPOL
	USA	ENVASES	PHILIPPINES	GENPACK

HEAD OFFICE/FACTORY
40, Hwajeonsandan 6-ro, Gangseo-gu, Busan, Korea
TEL +82-51-264-2112~5 **FAX** +82-51-264-2116 **E-mail** sscan6835@gmail.com



OPENING THE FUTURE

Deep Drawing Transfer Press
for EV Cell Cases

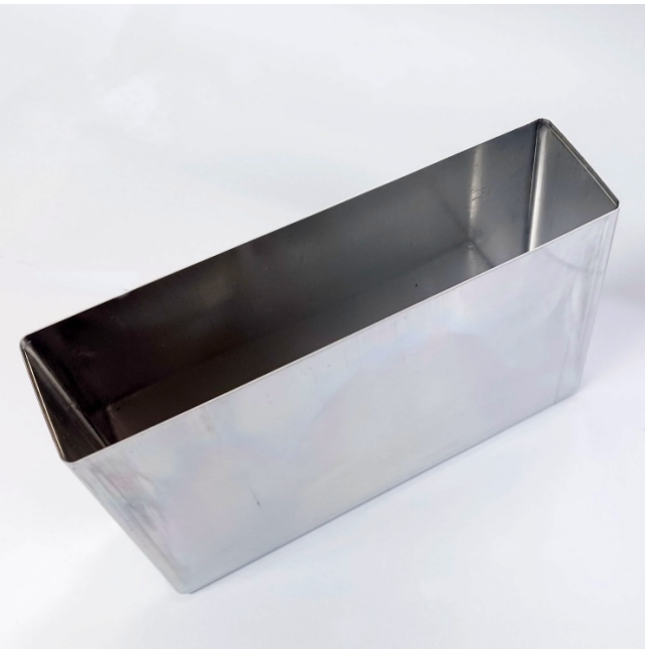


EV Press

Prismatic Cell Case Press



EV Press



Prismatic Cell Case

Technical Specification

PRISMATIC CELL CASE PRESS			
1ST PRESS		2ND PRESS	
CAPACITY	100TON	CAPACITY	200TON
DIE HEIGHT	950MM	DIE HEIGHT	1250MM
BLANKING STROKE	130MM	TRANSFER STROKE	350MM
#1 DRAWING STROKE	270MM	NUMBER OF STATIONS	10ST
STROKE PER MINUTE	5~40 SPM		
MAIN MOTOR	75kW*6p, 1200RPM		
FLOOR SPACE	w5700 * d4300		
GROSS WEIGHT	100TON		

EV Press

Cylindrical Cell Case Press



EV Press



Cylindrical Cell Case

Technical Specification

PRISMATIC CELL CASE PRESS			
1ST PRESS		2ND PRESS	
CAPACITY	60TON	CAPACITY	200TON
DIE HEIGHT	390MM	DIE HEIGHT	760MM
BLANKING STROKE	120MM	STROKE	250MM
#1 DRAWING STROKE	2ST	NUMBER OF STATIONS	12ST
STROKE PER MINUTE	60SPM	STROKE PER MINUTE	5~50SPM
MAIN MOTOR	11kW*6p, 1200RPM	MAIN MOTOR	55kW*6p, 1200RPM
FLOOR SPACE	w2600 * d1050	FLOOR SPACE	w4000 * d2500
GROSS WEIGHT	15TON	GROSS WEIGHT	70TON

The World's First Dual-Lane Transfer Press

Cutting-Edge Technology: 3D Design & Simulation Program

